

Cambridge  
International  
AS & A Level

**Cambridge International Examinations**  
Cambridge International Advanced Subsidiary and Advanced Level

**GEOGRAPHY**

**9696/33**

Paper 3 Advanced Human Options

**May/June 2016**

INSERT

**1 hour 30 minutes**

**READ THESE INSTRUCTIONS FIRST**

This Insert contains all the Figures referred to in the questions.



This document consists of **4** printed pages.

Fig. 1 for Question 1

## Some benefits of securing land tenure in LEDCs

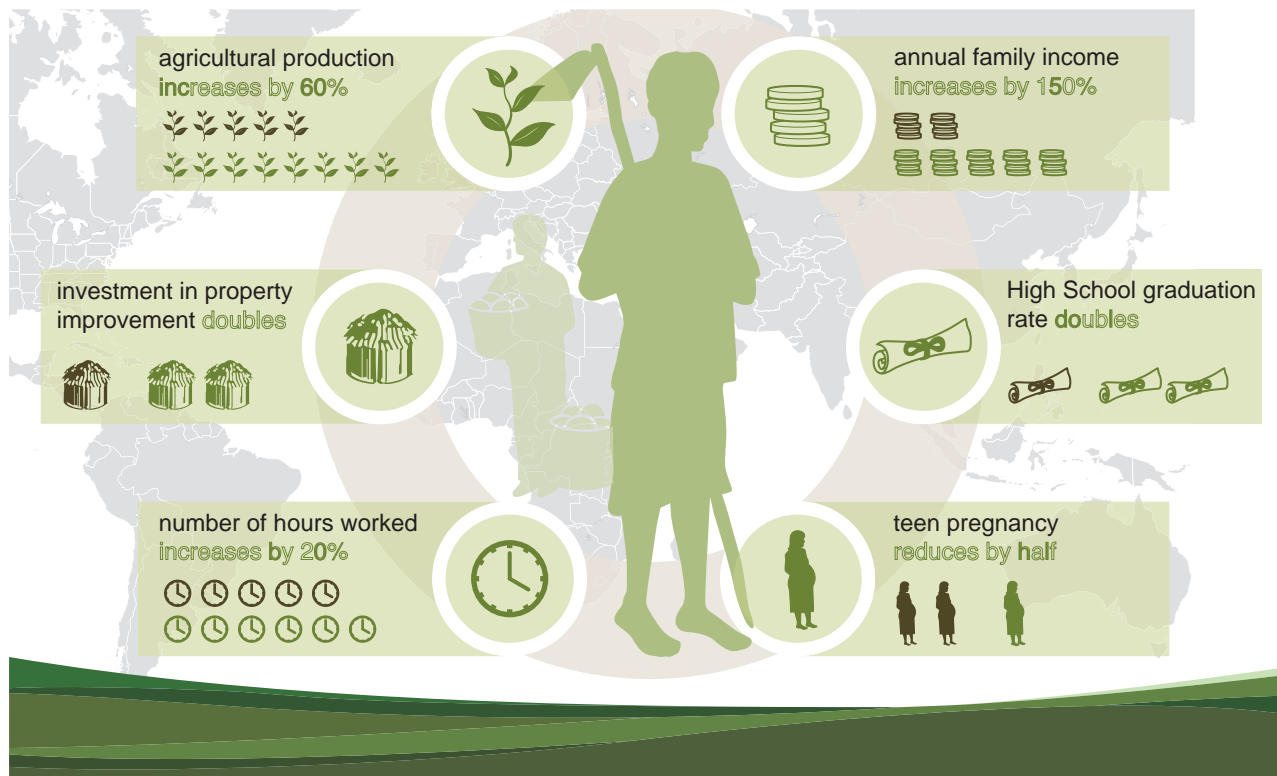


Fig. 2 for Question 4

## Rural and urban populations for world regions in 2011 and projections for 2050

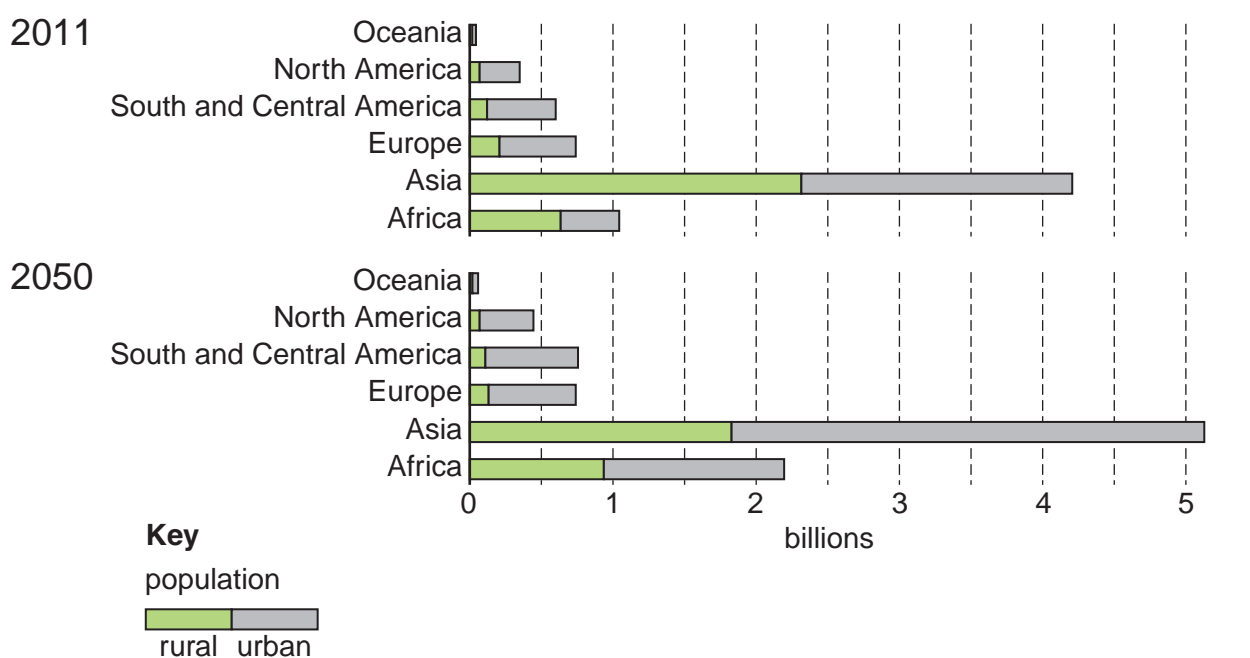


Fig. 3 for Question 5

Visible trade flows in 2008

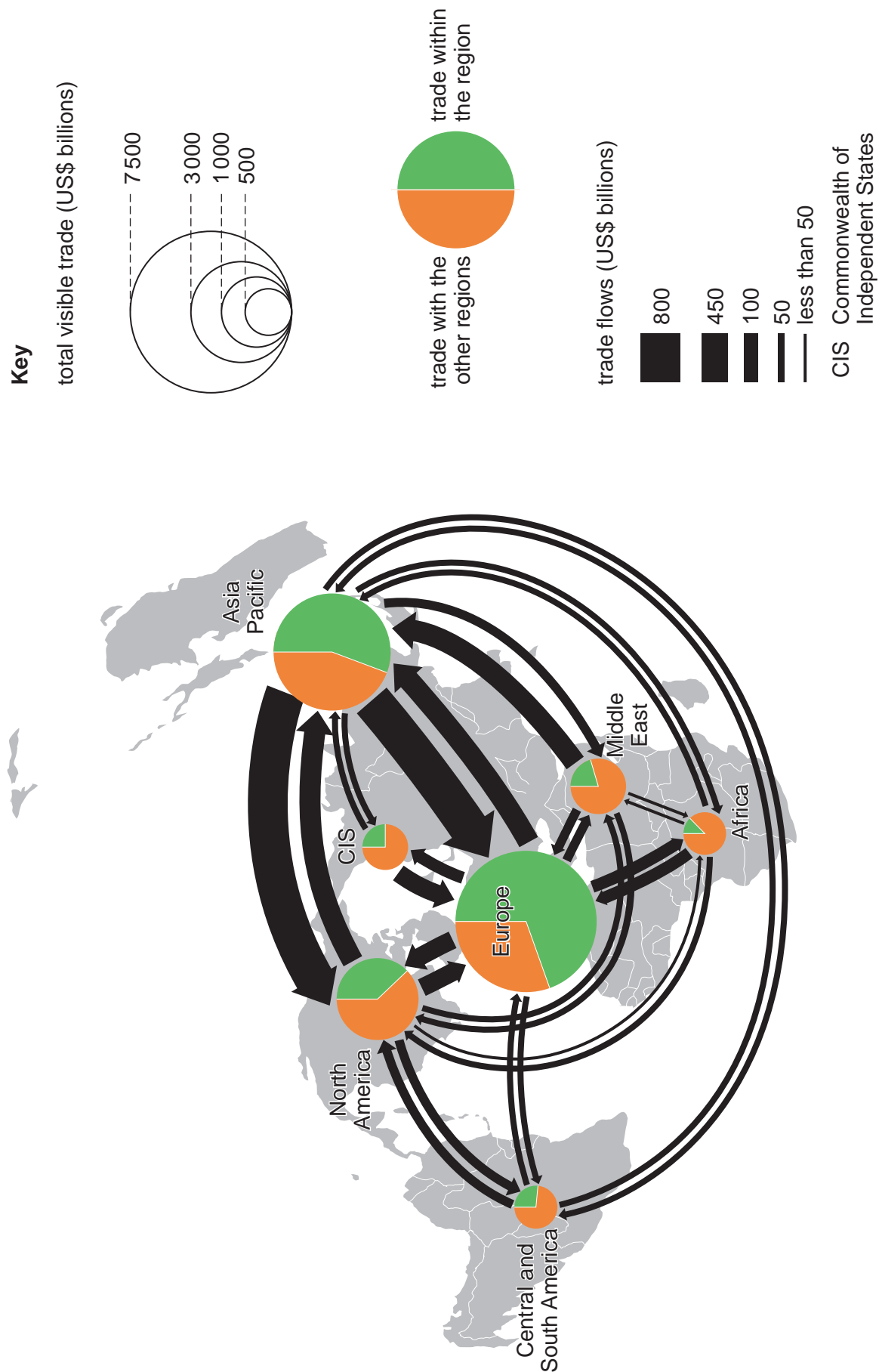
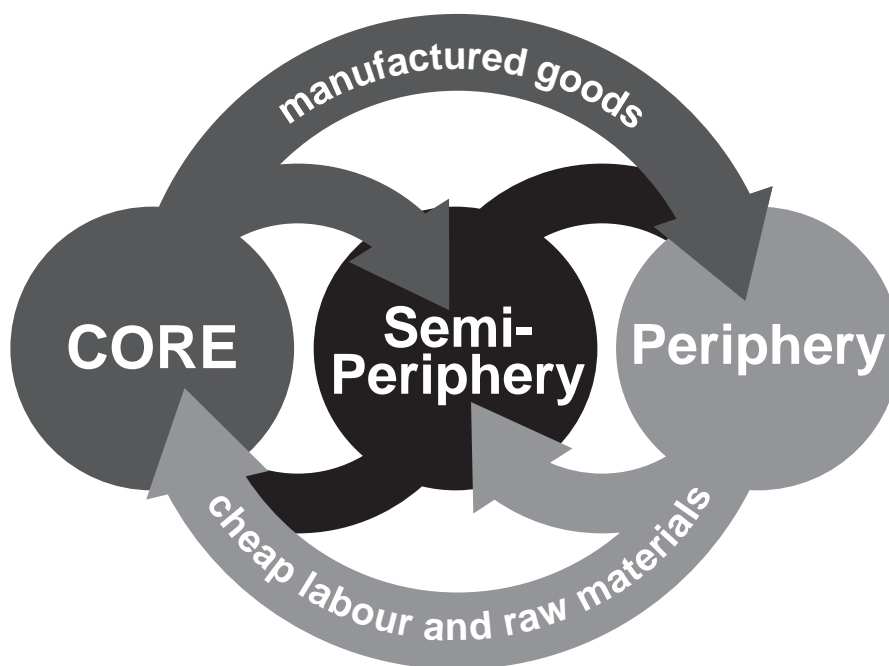


Fig. 4 for Question 7

A model of regional development within a country



Permission to reproduce items where third-party owned material protected by copyright is included has been sought and cleared where possible. Every reasonable effort has been made by the publisher (UCLES) to trace copyright holders, but if any items requiring clearance have unwittingly been included, the publisher will be pleased to make amends at the earliest possible opportunity.

To avoid the issue of disclosure of answer-related information to candidates, all copyright acknowledgements are reproduced online in the Cambridge International Examinations Copyright Acknowledgements Booklet. This is produced for each series of examinations and is freely available to download at [www.cie.org.uk](http://www.cie.org.uk) after the live examination series.

Cambridge International Examinations is part of the Cambridge Assessment Group. Cambridge Assessment is the brand name of University of Cambridge Local Examinations Syndicate (UCLES), which is itself a department of the University of Cambridge.